

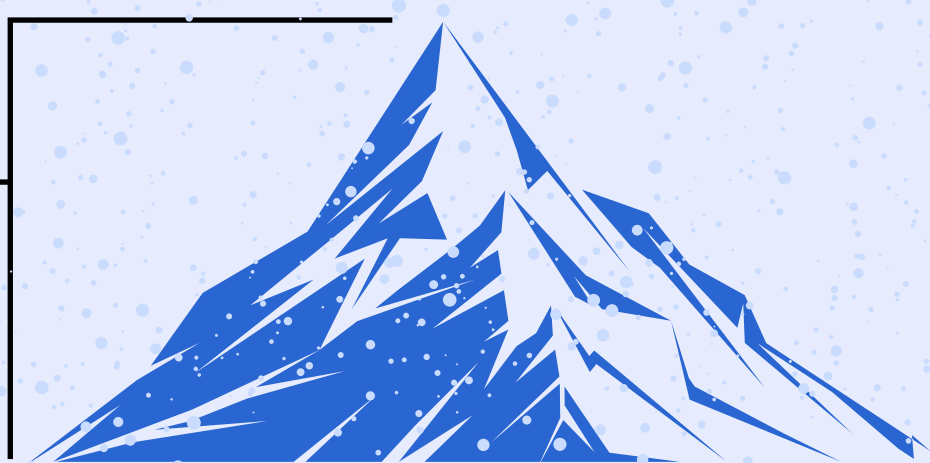
THE DAILY SNOW

This winter will go down in the books as one of the snowiest ever in Lowell. Here's a look at how much has fallen — and how Facilities Operations and Services keeps the streets, sidewalks and stairs clear across campus.

SNOW TOTAL

103.2 inches (8 feet, 7.2 inches) through Feb. 19, 2015

Rowdy 6' 1"



THE CAMPUS

150

acres



6.5

miles of walkways



2.2 million

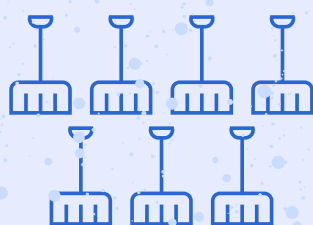
square feet of parking



THE WORKFORCE

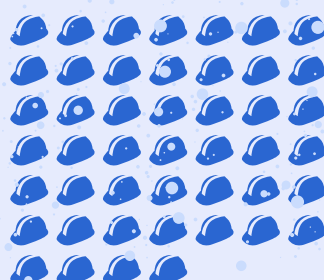
7

Grounds team members



46

Housekeeping/Building Services team members



2

Additional teams of private contractors



THE FLEET

10

Bobcats



2

Toolcats



5

Loader Trucks



15

Plow Pickup Trucks



7

Tri-axle Dump Trucks

