



# LIRA NEWSLETTER

LEARNING IN RETIREMENT ASSOCIATION  
Office of Community Service – UMass Lowell  
Member of Elderhostel Institute Network  
Tel.: (978) 934-3135 Web: [uml.edu/community/LIRA](http://uml.edu/community/LIRA)

December 2012

Vol. 19 No. 4

*Please join us for  
LIRA's Annual Holiday Party  
and Town Meeting*

**Wednesday, December 12, 2013  
10 AM until Noon**

Alumni Hall, 84 University Avenue, Lowell, MA  
Shuttle bus from the Perkins Street Parking Lot

- Three Scholarship Awards will be given.
- Hear about our Winter Intersession.
- Participate in the Consumable Auction.
- Enjoy the snacks and meeting with friends.

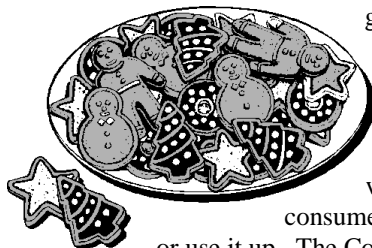
**See details inside.**

*Snowflakes are one of nature's most fragile things, but look what they can do when they stick together.*

# LIRA'S Scholarship Fund Annual Auction

We will hold our annual auction at the LIRA Holiday Party on December 12th. We have decided that the auction will be a "Consumable Auction" once again. The Auction is a major fundraiser for the Scholarship Fund. This year LIRA will be

giving \$1500.00 scholarships to three UMASS Lowell students.



What is a Consumable Auction? It is an auction where all donated items can be consumed, i.e., you eat it, drink it, do it or use it up. The Committee sells tickets; \$1 per ticket or 6 tickets for \$5. You

decide what item(s) you want and put your ticket(s) in the appropriate container(s). All donations must be brought directly to Alumni Hall on the day of the party.



Some things you might donate:

Baked Goods; Candy; Wine; Gift Certificates, i.e., restaurant, movie, theater, grocery store, and bookstore

Suggestions for Baskets you can make:

Book – put a gently used book in a basket with a bookmark, book light, china teacup, box of tea, etc.

Food – Italian or Mexican

Soup Lovers Basket

I think you get the idea. It will all be wonderful and we have a great time deciding just what we want to win. Thank you to everyone who has donated in the past. Let's make a difference in someone's life and have a great auction this year.

*The Auction Committee,  
Carol Cannistraro*

## Coffee Break Note



Many, many thanks to all the volunteers who provided the delicious refreshments during the fall session. In an effort to simplify coffee breaks, it has been decided to offer only coffee and tea at the intersession programs. We will order the coffee, tea and snacks from Aramark for the

first two intersession programs at the Tsongas Center. The rest of the intersession is at the Rec Center where volunteers will make the coffee and tea and it is suggested that members bring their own snacks.



The Town Meeting will be held on March 13, 2013. Classes begin on Monday, March 18, 2013.

## Holiday Party Details



You might have noticed that the front page did not say 'Potluck Luncheon'. This year, it has been decided to simplify the food at the Holiday Party, because of the difficulties of transporting the food on the shuttle bus. If you would like to volunteer to bring some kind of finger food (fruit, cheese and crackers, cookies, etc.), it would be appreciated.

Contact Mary Willis or Dawn Gillogly if you have any questions.

In lieu of exchanging gifts, LIRA members have donated many new books in past years for distribution by Community Teamwork, Inc. of Lowell, the agency which serves families in shelters and oversees many child care programs in the City. Each book is marked with a bookplate denoting that it is a gift from Learning In Retirement Association. Joan Aseltine from CTI says:

*I checked with staff; Big Brothers Big Sisters would love to receive books for children ages 7 to 15 and/or hat and gloves. For Coats for Kids, there is a special need for teens with hats and gloves. There continues to be a need for children's books and warm items for infants, toddlers, and young children in programs through CTI Division for Housing and Homeless and Division of Child and Family Services.*

**Please bring a new book and/or hat and mittens, unwrapped, to the Holiday party.** Thank you for your participation. Contact Elaine Jelescheff if you have any questions.

## Location of the Holiday Party and Parking Lot

The Holiday Party will be held in Alumni Hall on University Avenue, Lowell from 10 a.m. to noon. The hall is part of the Lydon Library and the entrance to the hall is on the left as you are facing the building. A shuttle bus will be taking us from the parking lot to Alumni Hall, leaving us off in the front of the building. The shuttle will be running from 9:15am to 1:00pm for as many trips as needed.

**Parking is in the Perkins Street Lot.** This is the lot where we normally park when we attend classes at the Rec Center. The bus will be on Riverwalk Way right in front of the entrance to the lot. You should use your hangtags in this parking lot.

## Newsletters on Website

The newsletter will appear on the website in color, around the first of the month. If you would prefer to read them there instead of getting a hard copy, please let Shirley Mitchell know.

The website for the newsletter is [www.uml.edu/community/LIRA/newsletters.html](http://www.uml.edu/community/LIRA/newsletters.html)

## Music In the Air

LIRA members have long been aware that when Dorothy Bromage offers a class in something, it is always interesting, well done and well-remembered. On October 24, her class on the theremin was no exception. In fact, you could say it was a "Tour de force". It was extremely well attended, hardly a vacant seat. Dorothy had assigned various tasks to several helpers and everything proceeded seamlessly.

It seems that everyone has heard the sound of the theremin, probably in a movie, but very few have ever seen one. Dorothy had one in the front of the room on a table and each one of us was invited to come up and play it. To over simplify, it is played by moving the hand near the antenna but not ever touching it. The other hand, meanwhile, controls the volume of sound.

The theremin was invented by Professor Leon Theremin who patented it in 1928. The theremin became more well-known when Professor Robert Moog (1931-2005) began producing kits for sale. He was so successful in popularizing the instrument, that it was used as background music in several well-known movies, principally *Spellbound*, *Lost Weekend* and *The Day the Earth stood Still*.

Dorothy showed a DVD of Clara Rockmore, a concert violinist, who gave up the violin because of an injury to her hand and developed an interest in the theremin. Moog built her one and she concertized throughout Europe and America for many years.

Each one of us played the theremin a bit and had our pictures taken at the instrument. In addition to learning a lot, we also had some fun watching other folks trying to play the instrument. The amount of work and preparation of materials and handout sheets on Dorothy's part was simply amazing and well appreciated. We look forward with great anticipation to her next presentation whatever it will be.

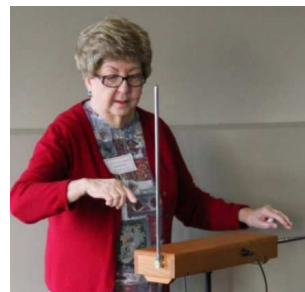
Frank Carroll



An attentive audience learns about the invention of the first synthesizer, the theremin.



Participants each had a turn playing Dorothy's theremin. Jerry Gilmore(l) and Steve Sussman(r) have mastered the technique.



Dorothy Bromage playing 'Silent Night' on her theremin.



Alex Shure, theremin technician, took a turn. The setup and adjustment to the theremin is to his credit.

## "Skyscraper In the Mist"



The hot wax (encaustic) and collage painting by LIRA member Connie Lanseigne-Case is included in the current annual juried member exhibition at the Whistler House Museum of Art. For five years, Connie has exhibited works at WHMA in varied mediums, watercolor, colored pencils, and mixed media. The

member exhibition is in the Parker Gallery for the month of December, and hours on Wednesday through Saturday are from 11 a.m. to 4 p.m.

## The Fitchburg Art Museum

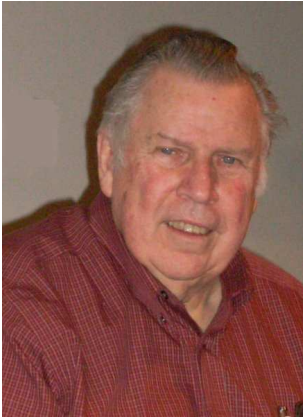
On Wednesday, October 3<sup>rd</sup>, we visited North Central Massachusetts' most treasured cultural institution, the Fitchburg Art Museum. This is a world-class family-friendly museum with a permanent collection spanning 5,000 years. The museum was founded in 1925 through the bequest of artist, collector and Fitchburg native Eleanor Norcross (1854-1923). Her extraordinary talents and educational vision highlights her as an important pioneer in American social history.

We saw a wonderful exhibit of Hudson River School paintings including landscapes by Thomas Cole, Frederic Church, Cropsey, Kensett and many others. We saw several magnificent African sculptures on our way to the Egyptian galleries. There were spectacular murals, mummies, and other intriguing artifacts. The Museum guides were very knowledgeable and we all had a great time.

Barbara Page

# Remembering Don Pattershall

Past president of 10 years, Don Pattershall, died on August 8, 2012. Following are remembrances from some of our members.



Dear Don,

I wish I had told you last year how appreciative I am of your continual contribution toward the growth and development of LIRA as it is now.

Besides your 10 years as President, your leadership was immeasurable.

I miss your good nature and generosity. Your upbeat spirit was contagious.

There was no time to say goodbye. I'm so sad and grieve for the loss of

you. Did I thank you enough for your support and encouragement? I will always remember your kindness as well as all the nice things you did for so many. May you rest peacefully.

*Marjorie Short*

Don Pattershall was a very special gentleman; he always had a smile and a greeting for each member. Don was always first to act wherever he saw a need, whether it was getting coffee ready, or transporting equipment to classes. His unselfish dedication over 10 years helped lay a firm foundation for the continuing growth and well-being of LIRA.

*Barbara Arnold*

Having served on the advisory board for several terms with Don, I know of his dedication to LIRA. He not only had the business of the meetings lined up, but also the coffee made and the cookie tin out. Don seriously pursued LIRA's connection to the university, particularly in finding meeting spaces for us and available speakers for our programs. Our final session each year before summer break at the Brew House restaurant was always fun, especially if Professor Melissa Pennell was able to join us.

I was very impressed by the fabulous collection of Christmas crèches that Don suggested I see at his church. He and Madeleine helped to arrange for the display each year.

We miss his sincere and determined effort to move LIRA forward and its current and increasing success is his legacy to LIRA.

*Eleanor Belanger*

During Don's long tenure as president of LIRA, and my many years as chair of the Arts and Music programs, whenever a new, different question arose especially that might involve finance, Don always was a phone call away ready to help grapple and resolve the issue. Often, I was amazed at the myriad of people he knew, and places he was familiar with. Sometimes, it was through his friendship with a potential presenter that members experienced a rewarding program. An example that comes to mind is a UMass professor who gave several organ recitals in different churches in Lowell. Don contributed his expertise many years to varied aspects of LIRA.

*Connie Lanseigne-Case*

Don took on the presidency of LIRA when we were facing many problems associated with the growth of UMass/Lowell as

well as our own organization. A suitable meeting place was always prominent on our agenda. When we were given The Residence at the West Campus as a meeting place it was in dire need of interior cleaning and painting. Don was a "can do" kind of guy. With the Dean's approval, Don and his volunteer crew painted all the rooms that we used. His height was a great asset for doing the ceilings! Later on Fox Hall became our designated meeting area. The acoustics there were difficult because of a very loud ventilating system. Don purchased audio equipment and set it up himself, so that all could hear. Personally, I remember an instance when my car was towed away by the campus police with no notice of where I could find it. That was the time when not everyone had a cellular phone. Don had one, called the right people, found my car, and drove me way out Gorham St. to pick it up. He just did it. I never had to ask. He was unassuming but generous with kindnesses and capabilities that I fondly remember.



Don and Dotty Morris painting the house at the West Campus in 1998.

*Dotty Morris*

When I picture Don, I see him in earlier days at the table in the 4<sup>th</sup> floor room in Fox Hall. Here is where The Great Decisions class would meet. Usually Chuck, the presenter of that time, would be at one end of the table. Don would be at the other end. Later he would share this end with his wife Madeleine, who was still working when Don first came to LIRA. During breaks I was seated close enough to enjoy his upbeat thoughts. Often, these would be about a planned trip to Maine, where his mother lived and where he had lived growing up. Fond reminiscing.

I also envision Don in presentations of mine. In the first of these he and others in the group showed their expressive skills in reading dialogue, and singing G&S tunes.

Later he spoke of his pleasure at these classes as well as classes presented by Marjorie. Don seemed to feel that they were a fine intro to LIRA. I think perhaps with his engineering background, he was used to classes favoring the left brain while our offerings called on other brain cells. Perhaps, for him, Marjorie and I used unique approaches. These are the ones that I remember his mentioning, especially, but I know he appreciated all his classes.

I continued through the years to see Don and then Don with Madeleine in Great Decisions classes, other classes, and general meetings. He was always kind, ready to help, interested in his fellow man.

I admire his diligence in serving as president for such a long time. I regret that we did not see more of him in the last years.

*Janet Shawcross*

*(Continued on page 5)*

**Don Pattershall** (Continued from page 4)

I do not have a particular story ...just that I do not think we would have the LIRA that we have today if he had not been our president and worked so hard to keep it going.

*Marion Richards*

Don worked with my husband, Ted, for many years at MA/COM and we had met at various functions. In January 2000, I saw Don at Hannaford and we chatted about what we were doing in our retirement. He asked me to attend the next program at the Winter Intersession. I attended and I never left! Ted said he was one of the most intelligent gentleman he had ever worked with and very good at delegating. He worked on a project with him for 3-4 months and Ted soon learned that he was doing a lot of Don's tasks. Don would smile and say 'Caught me' and laugh. My son belonged to the Chelmsford Historical Society when Don was president. He had my son running all over town delivering magnets. After I had been a member for a year, he asked me if I would do the newsletter – smiled and said 'it was easy'. Here I am still doing it and at times it is not easy. He was a sincere and giving man with a great sense of humor. As Ted said, he knew how to push buttons and get things done. We will miss his laugh, sense of humor and his 1950's hairdo!

*Ted and Jeri Durant*

## Scholarship Update

We have received scholarship applications from bright and very interesting students. The committee will meet November 18 to study them all and choose the winners of the three \$1500 scholarships, which will be presented at the December 12 Holiday Party. At a later date, we will make the applications available to the LIRA members so that they can see the variety of interests and work these students are involved in.

The Scholarship Committee would like to thank the members that have generously donated more than \$1200.00 and helped to make our scholarships possible. The donations to the coffee fund also go to the scholarship fund-- that portion that is not needed to supply our refreshment cart. The proceeds from the Consumable Auction also go to the fund. Thanks to all for your donations.

Thank you to Mary Welch for her many years of service to the Scholarship Committee. Mary has decided to retire from the committee; she has been on the committee since she joined in 1997. Welcome to John Mammalis who has joined the committee.

*LIRA Scholarship Committee  
Bill Terris, Chair*

---

## Ever wonder about Earlier Times at LIRA through the eyes of a longtime LIRA Member? Member Spotlight on Alan McKersie

Alan retired in 1991 after employment as a System Engineer/Manager for 31 years at MITRE (Bedford), preceded by 3 years as a Technical Staff member at Bell Telephone Labs, NYC and more than 4 years with the USAir Force (Texas, Korea, and Ohio). Alan was ready to return to his love of working with his hands to build stuff and to do some adventure traveling.

From then on Jane and he could schedule their own time and so they set about learning adventures once a year with a Walking Group led by a Canadian Environmentalist throughout the British Isles and US National Parks. They also attended a number of foreign and domestic Elderhostel programs. Jane and Alan were both members of their Church Choir and toured with the choir to England and Germany.

On the home front they were introduced to LIRA early on by Charles Harrison a fellow member of their Church community and also a recent retiree from MITRE. Charles was a West Point graduate who completed a full term with the Army attaining the rank of Colonel and then he established a second career at MITRE where Alan met Charles. It was Charles who promoted a Science/Engineering course track at LIRA arranging for many interesting learning experiences in the classroom and on field trips. Charles may have been the one who brought the "Great Decisions" program to LIRA. During his Army career he had been assigned to the staff of the US Ambassador in Paris, France and he was versed in the issues of Foreign Affairs and he brought Alan into this LIRA program that continues today.



Another interest of Alan's is Health and Healing and he is happy to see that LIRA has introduced relevant Teaching Company videos to the course offerings and LIRA has afforded participation in UMASS Lowell exercise research through the Physical Therapy Department. Alan also finds the classical musical programs at LIRA, using The Teaching Company lectures, to be enjoyable and therapeutic.

Since 1991 Alan's love of Hands-on building has been satisfied by volunteering with "Habitat for Humanity". When Alan read about President Jimmy Carter leading his first "Blitz Build" in the Bronx he knew that he had to get involved with the hammer swingers! Jane and he went on their first "Blitz Build" to Washington, DC where they rehabbed brick row houses in the Sandtown section of Baltimore. Since then they have joined in on about 15 Habitat accelerated "Builds" in the US and Canada. On the local level Alan joined a Tuesday Crew of hammer swingers for Habitat (mostly retirees) and he has continued this volunteer effort until several years ago when the demands for maintenance on his Chelmsford and Tuftonboro, New Hampshire homes took over

his Tuesdays and Wednesdays! The McKersie's own a cottage on Mirror Lake in Tuftonboro, NH whose age and attack by carpenter ants has needed Alan's attention of late.

*Edited by Jeanne Gunion*

# Sargent the Painter

Talk by Jean Schott  
October 31, 2012

John Singer Sargent was born in 1856 in Florence, Italy into an affluent American family. The family traveled in Europe, spending a lot of time in Italy during Sargent's childhood, where they met and traveled in circles of influential Americans and others. His father sketched and his mother painted in watercolor. As a youth, Sargent did a lot of sketching and he felt that being an artist was his calling. His preferred media were watercolors and oil.

As an artist Sargent lived principally abroad in Paris, Italy, and London. Toward the latter part of his life he returned to the United States and lived in Boston where he painted the Boston Public Library murals that can be seen there now. Jean showed many slides such as his "Self Portrait" that can be interpreted to show Sargent as a "loner" identifying with the upper middle class. Many of his paintings show his handling and sensitivity to light and dark in an impressionistic style. At the same time many of his works clearly delineate his subjects as individuals. He also painted landscapes and still life paintings.

Many of his paintings show his extensive use of light as in the "Wine Glasses." He studied with Carolus-Duran, a progressive who less traditional approach allowed a method of working directly on the canvas with a loaded brush. More on this can be

found on the website [johnsingersargent.org](http://johnsingersargent.org). Other paintings of this period include "Rehearsal of the Pas de Loup Orchestra at the Cirque d'Hiver", "Luxembourg Gardens", "Oyster Gatherers", and of particular interest to visitors of the MFA is "Daughters of Edward Darley Boit" of 1882. This painting shows the daughters posed amidst very large blue and white porcelain vases Sargent painted many portraits too.



*El Jaleo* by John Singer Sargent 1882  
Isabella Stewart Gardner Museum, Boston

While living in Paris, Sargent travelled to Egypt, Morocco, and Palestine and painted in differing styles and media. A painting of this period is "El Jaleo" 1882 that can be seen at The Isabella Stewart Gardner Museum along with the famous "The Portrait of Isabella Stewart Gardner"!

Well known in Boston are the wall murals of Biblical stories that Sargent painted on canvas and were mounted on the ceilings and walls at the Boston Public Library where they can be seen today.

Other works that Jean mentioned are "El Jaleo" and his most famous painting, "Madame X" which was painted in 1884 and is at the Metropolitan Museum of Art. Sargent was fond of painting children in addition to scenes in cities such as Venice, Paris, and other cities. He died April 14, 1925 in London.

*Jeanne Gunion*

## Meeting Old Friends

Many long-time LIRA members attended a luncheon at the One Ten Grill in Chelmsford on November 14. We were delighted to see former long-time members Barbara Arnold and Bob and Betty Jack. Barbara joined LIRA in 1990 and was the secretary for many years and on the scholarship committee. Many of us remember the wonderful opera courses that the Jacks gave for

several years. Betty was the Scholarship Committee chairman for 5 years. Janice Shuhany joined LIRA 11 years ago and has moved to the Cape. We will miss her! Betty Sampas joined LIRA 21 years ago in 1991 and is the longest continuous LIRA member today. It was an enjoyable lunch meeting old friends and reminiscing about the early years.



Betty Sampas

Barbara Arnold

Janice Shuhany

Bob and Betty Jack

## Member News

The past months have not been good for many LIRA members. Four more have suffered injuries due to falls.

Sally Cady and Barbara Page both received minor injuries and have recovered.

Kay Collins and Dorothy Bromage have been hospitalized with more serious injuries and spent time in rehab.

They are now both recuperating at home and would surely like to be remembered.

Remember also our past president, Jean Dettman, who has had another setback, having suffered a stroke.

Other members to keep in our thoughts are Eleanor Belanger, who continues to recuperate at home, and Deanne Sferrino who is recovering from surgery.

Janice Shuhany has moved to the Cape. Her new address is 36 Little Dipper Lane, South Yarmouth, MA 02664, phone: 508-398-2668, cell: 978-726-5059.

Please contact me at [siallard@verizon.net](mailto:siallard@verizon.net) or 978-256-8572 if you know of any members who would like to be remembered by LIRA so that I may send cards.

*Simone Allard*

---

## DeCordova Museum

On Wednesday, September 19<sup>th</sup>, Steve Sussman planned for us a tour of the DeCordova's Sculpture Garden. We divided into three groups with guides. My group started with a short hike up a hill into a garden with bushes, mosses, small trees, and a brook trickling down through several pools. In contrast to the natural Japanese feeling of the garden, several large stones had sharp, square holes cut through them. Spirit doors? Then we passed a vintage car painted silver and a plexiglass container with a bed beautifully made with luxurious linens awaiting whom? Snow White? We went on to a marvelous site-specific installation. Under a huge pine tree were six or so roundish bronze balls. They looked as if they might have dropped off the tree, and they had holes that were partially filled with pine needles. Then on to my favorite: a large collection of steel circles cascading down a hill. They varied in size from very small to ones you could walk through. They had rusted; and, from a distance, this huge metal structure looked like a piece of lace or embroidery rippling down the green hill.

Then on to what I thought was a slender tree growing out of a rock. It was a lovely, twining, bronze sculpture with mythical overtones. On the roof of the museum was a tent-like structure made entirely of plastic straws. The sun had bleached some of them so the colors ranged from red to pale orange. Some of us had lunch in the café while others picnicked. Not to be forgotten is the museum's wonderful shop full of enticing goodies. We all had a good time and a great walk.

*Barbara Page*

Hurricane Sandy at the end of October caused a little confusion as to whether or not there were classes. On Monday, the University was closed; therefore, no classes were held and all members were contacted by email or phone. If you do not have power, try to call the class coordinator. On Tuesday, the University was open and the cancellation of classes was at the discretion of the facilitator. They are the ones that should contact you about the cancellation. If you have any doubt about the class being held, you should call the facilitator or coordinator of the course.

## Email Notification

If a cancellation affects the entire membership, an email will be sent to those people that signed up to have the notice emailed to them. **Please check your email in the morning if there is any doubt about a class being held.** Those not on the list will be notified by telephone. If there are others that would like to be on this email list, please notify Judy Miller (978-256-8466 or [jmiller29@verizon.net](mailto:jmiller29@verizon.net)) or Carol McCarthy (978-256-5904 or [jfmccart@aol.com](mailto:jfmccart@aol.com)). The following is the policy for class cancellations.

*Carol McCarthy  
Judy Miller*

## Class Cancellations

### Importance of Signing up for Courses

At times, unforeseen circumstances will necessitate the cancellation of a class or program. You will be notified of the cancellation if you have signed up for the course. Courses are open to all LIRA members and it is advisable that you sign up for a course even if you are unable to attend all of the classes. However, if you want to attend one of the sessions and you have not signed up for the course, it is best to call the Class Coordinator or Toby Hodes to ascertain that the class or program is still scheduled for that day.

### Emergencies (Cancellation of Classes/University Closing)

In the event that it becomes necessary to cancel a LIRA program for any reason, i.e. snowstorm, hazardous road conditions, or if the UMass Lowell campus is closed due to a storm emergency or other unexpected events and if the cancellation affects the entire membership, Toby Hodes will call Judy Miller or Carol McCarthy who are the phone squad coordinators, to let them know of the cancellation. Judy and Carol will then call the contact persons to inform them of the cancellation. These contact persons will then call the members on their respective list to inform them of the cancellation. For individual classes, coordinators are responsible for calling members for changes or cancellation of their class.

This recipe was submitted by Dorothy Bromage at the request of many people. If you like lemon, you will love it!

## PIZZA LIMONE BROMAGIA

### Ingredients

1 12" Mama Mary Gourmet  
Thin and Crispy Pizza Crust  
1 T olive oil  
1 T alfredo sauce  
½ tsp thyme leaves  
1 c shredded mozzarella cheese  
1/2 c shredded provolone cheese  
1 T minced garlic  
2 lemons thinly sliced

Preheat oven to 425 degrees.  
Place heavy duty aluminum foil on baking sheet.  
Spray with non-stick cooking spray.

### Assembling pizza

Brush crust with olive oil.  
Spread alfredo sauce evenly.  
Sprinkle thyme leaves on crust.  
Cover with cheeses, leaving ¾" edge uncovered.  
Sprinkle minced garlic on top.  
Place lemon slices to cover entire crust.

Bake 8 minutes  
For flavorful lemon, press each slice  
lightly with fork.  
(Lemon slices are not eaten.)  
Serves 4



## Time for a Change

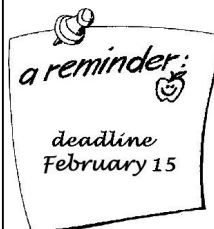
If you want to remain current with LIRA members, take pen or pencil in hand and make the following changes in your membership list.

### Address Change:

Janice Shuhany  
36 Little Dipper Lane  
So. Yarmouth, MA 02664  
508-398-2268  
cell: 978-726-5059

### Email change:

Mary Hamilton  
mary313d@verizon.net



The next newsletter will be out on March 1, 2013; the deadline for news items is February 15, 2013. Please remember that the coordinators are now responsible for getting someone to write an article about their program, if you want something to appear in the newsletter. Articles may be given to me at any time before the deadline.

*Jeri Durant*

### Newsletter Committee

Geraldine Durant, Editor & Calendar  
jeridurant@gmail.com  
Suzanne Knapp, Layout & Reproduction  
knapp.sc@gmail.com  
Shirley Mitchell & Sally Cady, Distribution  
shirleytm2@comcast.net  
Simone Allard, Member News  
siallard@verizon.net  
Jeanne Gunion, Member Spotlight  
jgunion@comcast.net



*I would like to wish you all a Joyous Holiday Season  
and a New Year of Peace, Happiness and Good Health.*

*Jeri Durant*





**LEARNING IN RETIREMENT ASSOCIATION**  
University of Massachusetts Lowell  
Lowell, Massachusetts 01834

The 2013 Winter Intersession, given between semesters, offers to retirees and those semi-retired, a sample of LIRA's almost year-round program and friendly community. The program is planned and much of it provided by the members themselves. The general public is invited to all Intersession programs. The time for these programs is 10:00 AM to 12:00 noon. The first two Intersession programs will be held in the Talon Room at the Tsongas Center, 300 Martin Luther King Jr. Way Lowell, MA. The remaining six programs will be in the Recreation Center, 100 Pawtucket Street, Lowell.

**January 9            Finding Flow: What Positive Psychology Has Taught Us About Thriving Across Adulthood**  
**Professor Kathleen Leonard**

Dr. Kathleen Leonard is a Visiting Professor of Psychology at UMass Lowell. She received her BA in psychology from Gordon College, her MA and her Ph.D. both in Developmental Psychology from Boston College. She will talk about how applicable her topic is to our lives, past, present and future, also as it relates to others.

Coordinator: Martha Hill\*

**January 16                            The Many Lives of Sherlock Holmes**  
**Dr. Melissa Pennell, Professor of English, UMass Lowell**

Sir Arthur Conan Doyle introduced the character of Sherlock Holmes in 1887's *A Study in Scarlet*. Holmes went on to appear in three other novels, including the popular *Hound of the Baskervilles* and more than 50 short stories. Conan Doyle tried to end Holmes' career and life in the confrontation with Moriarty at Reichenbach Falls, but reader demand brought about his return. Reader demand and fan interest has turned Sherlock Holmes into an immortal character. In this talk and discussion, we'll look at the original Holmes and at clips of some of the movie and television adaptations; we'll then consider the many authors, as well as film and television productions, that continue to invent new versions of Holmes and his detective career.

Coordinator: Ann Dahlman\*

**January 16                            Book Discussion**  
**Toby Hodes\***

12:30 PM – 2:30 PM *Citizens of London: Americans Who Stood With Britain in its Darkest, Finest Hour*, non-fiction by Lynne Olsen

**January 23                            National Ranger Memorial Foundation, Inc.**  
**Danny Davis from the Army Rangers**

The National Ranger Memorial Foundation, Inc. serves U.S. Army Rangers of all eras through recognition in a granite monument located in Fort Benning, Georgia, display of Hall of Fame members, scholarships to deserving individuals and assisting Ranger families. Danny Davis will give a brief history of the Rangers, the Ranger training Brigade, the 75<sup>th</sup> Ranger Regiment and some examples of current ranger qualified soldiers out in the regular army.

Coordinator: Carole Mumby\*

**January 30                            Before GPS: the Early Days of Navigation**  
**J. Leon Poirier\***

In a fascinating and enlightening presentation J. Leon Poirier, a senior navigator in the U.S. Power Squadron, will demonstrate many of the instruments that early sailors used to guide them in the discovery of the new world. Using replicas of navigation instruments from the 15th to 18th century Dr. Poirier will explain how sailors managed to travel around the globe. J. Leon Poirier has taught navigation for 30 years. He has also taught electrical engineering at UMass Lowell and at Tufts University. He holds BS, MS and Ph.D. degrees.

Coordinator: Toby Hodes\*

**February 6**

**Collage Workshop  
Pamela Wamala**

Bring some of your favorite photos or postcards and scissors. Pamela will help you incorporate them into a “memory collage.” You may want to check out the scrapbooking aisles at Michaels. Other materials will be supplied. Pamela is an artist at the Brush Gallery and does workshops in her studio and other locations.

Coordinator: Barbara Page\*

**February 13**

**China Odyssey  
Richard Grove\***

In October 2012 Richard and Nancy Grove visited China for 25 days with Road Scholar (Elderhostel). This illustrated talk will describe their visits to Beijing, Luoyang, X'ian and its terra cotta warriors, Chongqing, a cruise on the Yangtze River through the Three Gorges area, the mountainous province of Guizhou, and cosmopolitan Shanghai. The trip included many opportunities to meet ordinary Chinese citizens: farmers in a rural village, students in a middle school, a farmer relocated by the Three Gorges dam project, several university professors and university students. It was a particularly interesting time to visit China just before the US elections and the announcement of new national leaders in China.

Coordinator: Toby Hodes\*

**February 13**

**Book Discussion  
Toby Hodes\***

12:30 PM – 2:30 PM *Ye Olde Curiosity Shoppe*, fiction by Charles Dickens

**February 20**

**Climate Change and its Potential Future Impacts  
Professor Juliette Rooney-Varga**

Professor Rooney-Varga is the founding member and Director of the UML Climate Control Initiative (CCI). Her ecology research is supported by several Federal and State grants. The mission of CCI is to bring faculty, students and community together to address the potential future impact of problems caused by the changing climate, some of which she will address during this program.

Coordinator: Marjorie Short\*

**February 27**

**Alternative Sources of Energy  
Nick R. Schott, Ph.D. and Emeritus Professor, UMASS Lowell**

Energy and new sources of energy are a major worldwide problem. Concerns about global warming, environmental impact, technical challenges, political and legal obstacles all complicate the shift to green energy. The talk will examine the choices faced for nuclear, wind, solar, geothermal, biofuels, and hydro-electric energy sources.

Coordinator: Jean Schott\*

\*Member of LIRA



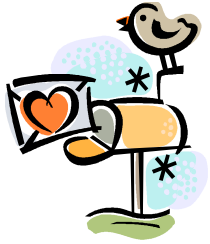
# December 2012

Sun	Mon	Tue	Wed	Thu	Fri	Sat
						1
2	3	4	5	6	7	8
9 	10	11	12 10AM—Noon Town Meeting and Holiday Party Alumni Hall	13	14 12:30—2:30 Book Discussion <i>A Tree Grows in Brooklyn</i> by Betty Smith	15
16	17	18	19	20	21 	22
23	24	25 	26	27	28	29
30	31					

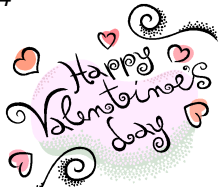



# January 2013

Sun	Mon	Tue	Wed	Thu	Fri	Sat
		<p>1</p>	2	3	4	5
6	7	8	<p>9 10 AM to Noon</p> <p><b>Finding Flow - Professor Kathleen Leonard</b></p>	10	11	12
13	14	15	<p>16 10 AM to Noon</p> <p><b>Many Lives of Sher- lock Holmes—Dr. Melissa Pennell</b> 12:30—2:30 <b>Book Discussion</b></p>	17	18	19
20		22	<p>23 10 AM to Noon</p> <p><b>National Ranger Memorial Founda- tion—Danny Davis</b></p>	24	25	26
27	28	29	<p>30 10 AM to Noon</p> <p><b>Before GPS— J. Leon Poirier</b></p>	31		



# February 2013

Sun	Mon	Tue	Wed	Thu	Fri	Sat
					1	2
3	4	5	6 10 AM to Noon <b>Collage Workshop— Pamela Wamala</b>	7	8	9
10	11	12	13 10 AM to Noon <b>China Odyssey— Richard Grove 12:30—2:30 Book Discussion</b>	14 	15	16
17	18 	19	20 10 AM to Noon <b>Climate Change and it Potential Future Impacts—Professor Juliette Rooney- Varga</b>	21	22	23
24	25	26	27 10 AM to Noon <b>Alternative Sources of Energy—Dr. Nick Schott</b>	28		